

ENABLING PEOPLE TO
LIVE LIFE THE WAY
THEY CHOOSE



Strode Park
Foundation

Caring since 1946

2023 -2024

ANNUAL REPORT

REGISTERED CHARITY NUMBER: 227794

CONTENTS

| | |
|--------------------------------------|--------------|
| CHAIRMAN'S INTRODUCTION | PAGE 3 |
| CHIEF EXEC'S REPORT..... | PAGE 5 - 7 |
| TRIUMPH OVER ADVERSITY..... | PAGE 8 - 9 |
| REFLECTING ON THE END OF AN ERA..... | PAGE 10 - 11 |
| OUR SERVICES..... | PAGE 12 |
| VOLUNTEERING | PAGE 14 |
| FUNDRAISING REVIEW..... | PAGE 15 - 16 |
| FINANCIAL ACCOUNTS | PAGE 18 - 19 |

CHAIRMAN'S INTRODUCTION

In my opening commentary to last year's annual report, I commented that the year 2022/23 had been an extremely challenging year both for Strode Park and most local social care providers.

Unfortunately, exactly the same can be said of 2023/24 - perhaps even more so.

From a financial perspective the year ended with a deficit of almost £1.7 million compared to one of just £9,000 the previous year. This was driven by a significant dampening of income underpinned by the negative impact on referrals and occupancy consequent upon the fall in the CQC rating of Strode Park House to 'inadequate' towards the end of the preceding financial year.

At the same time, we faced substantial growth in our expenditures.

Not only did this increase include a rise in staff costs attributable to the significant lifting of remuneration rates (implemented as a key element in our strategy to improve staff recruitment and retention) but also a slower than anticipated counter balancing reduction in agency costs.

Added to this we faced the same inflationary pressures in food and energy prices as everyone else (together they comprise the second largest component of our spending after staff costs) as well as a number of exceptional expenditures including those linked to a necessary upgrading of the fire prevention and detection systems.

But all is not doom and gloom. As noted further on in this report, almost all of the strategic objectives set for 2023/24 were achieved and looking to the future I believe there are genuine grounds for optimism.

Expenditure on agency staff is now reducing substantially as a result of our staff remuneration strategy and this not only benefits our finances but also, importantly, the quality of care.

Occupancy levels have substantially risen with obvious benefits to SPF's income and all of our services now enjoy a Care Quality Commission rating of 'Good',

and at the time of writing, our finances are due to realise a significant boost with the conclusion of the sale of Redwalls.

But perhaps above all, my optimism springs from the unfailing dedication of our hard-working staff who strive always to provide excellent care and thereby promote the extremely positive reputation of Strode Park.

I believe this is reflected in the immense support SPF receives from individuals, businesses and, of course, our many volunteers from the local community. I take this opportunity to record my sincere gratitude to all of these groups.

This is the last time that I shall write the introduction to SPF's Annual Report as I shall be standing down as Trustee and Chairman of the organisation at the Annual General Meeting in November.

It has been an enormous privilege to be associated with SPF over the last 17 years and in closing I should like to offer my thanks to everyone throughout the organisation for helping to make it such an enjoyable time for me personally.

I wish Strode Park the very best for the future.



Nick Wells
CHAIRMAN



OUR AIM IS TO MEET ALL LEVELS OF
NEED



CHIEF EXEC'S REPORT

Achievements and Challenges

This year was extremely difficult for Strode Park Foundation. Financial losses, the impact on cashflow, and the required remedial actions noted below tested the resilience and fortitude of the staff and the trustees.

However, continually inspired by the wonderful achievements and spirit of the service users, the Foundation has sustained improvements to the services and continued to advocate for the rights of people with disabilities.

Thirteen of the fourteen strategic objectives set in the 2022/25 Business Plan have been achieved or significant progress has been made towards these goals. More precisely:

- 1 Despite the slip in regulatory ratings for Strode Park House and the Coach House in 2022, all current registered services retained or regained 'Good' CQC ratings.
- 2 SPF set a target of reduced vacancies and improved staff retention and implemented strategies to achieve these aims. One strategy was a pay rise for Carers significantly above the rate of inflation. The outcome has been impressive with the number of employees increasing from 310 to 374 between April 2023 and March 2024.
- 3 Service users continue to play a role in decision-making processes and each service remains committed to broadening and deepening service user involvement further.
- 4 The annexe at Lady Dane Farmhouse was converted into two supported living units for people with disabilities and the first tenancy was issued in 2024.
- 5 In 2022/23, SPF successfully tendered for a new Day Opportunities contract from Kent County Council (KCC). In 2023/24, SPF reviewed the financial viability of this contract and concluded that it remained worthwhile. KCC has subsequently sought a reduction in the fee rate which Strode Park was unable to accept. This remains a subject of negotiation.
- 6 Governance has been strengthened even further through the appointment of new members to the Council of Management each of whom has commercial or social care knowledge and experience.
- 7 The digital transformation and upgrade has continued with further implementation of Person Centred Software (e-care planning system), Atlas (e-medication administration system), and RotaMaster (roster management system).
- 8 The sale of the unused land at Redwalls was completed in 2022.
- 9 The objective of improving financial reserves was not achieved.
- 10 The 'Register of Risk' was expanded and deepened and risk reduction and mitigation strategies strengthened. A member of the Council of Management has been assigned to lead on-going reviews and to submit regular reports.
- 11 The charity has continued to initiate infrastructure improvements, most notably those required by changes in legislation including post Grenfell fire detection and prevention system upgrades and electrical safety work.
- 12 The Foundation has introduced initiatives to enhance staff well-being including extending membership of the staff council and offering a confidential counselling service.
- 13 It is difficult to ascertain whether voluntary income has been maximised, but it is clear that revenue from the Theatre in the Park and the charity shop, together with receipts from grant giving trusts, individual and corporate donations, and legacies, continue to provide a vital source of funds.
- 14 Strode Park Foundation has continued to promote and embed positive organisational values through the annual staff awards, in job adverts, in individual supervision, and during initial induction and orientation training.

In addition to the above, all services achieved the top 5 star Environmental Health and Food Hygiene rating, the Foundation has achieved the advanced level NHS approved Certificate of Health and Safety Compliance (CHAS), and remains a 'Disability Confident Committed' organisation.

The above achievements could not have been secured without the backing of the local community and Strode Park Foundation is extremely proud to have been named the 'Charity of the Year' by the Lord

Mayor of Canterbury (2024/25), Herne Bay FC (2024/25), and the Forest of Blean Rotary Club (2023/24). This recognition is truly appreciated. Everyone at Strode Park is immensely grateful for the generosity of all the local businesses and the many individuals who have supported the Foundation either through financial donations or by volunteering to support the work of the charity in so many ways, including at the charity shop and Theatre in the Park.

This continued support to the Foundation is a vital component in the charity's mission to provide services of the highest possible quality for people with disabilities.

Financial Outcomes

From a financial perspective, several factors combined to make 2023/24 an extremely challenging year resulting in a deficit of £1,760,848.

Total income before gains on the remeasurements of pension liabilities and the disposal of assets was £11,844,054 compared to £11,834,653 in 2022/23.

Fee uplifts from key funders fell well short of inflationary increases in costs across the board.

Despite a CQC ratings improvement in April 2023 and a return to a 'Good' rating in June, the slip in the Strode Pak House rating in January 2023 continued to have a detrimental impact on occupancy and revenue did not recover to budget levels until April 2024.

The timing of this reduction in income coincided with both planned and unforeseen increases in expenditure.

The planned increases related to a rise of approximately 22% in the basic hourly rate for carers. This increase was a key part of the Foundation's business strategy and a proactive response to the increasingly difficult social care labour market which both Skills for Care and the Care Quality Commission reported was characterised by increased staff vacancy and turn-over rates.

As planned, this increase in care worker salaries led to a reduction in expenditure on agency staff (from £238,000 in May 2023, to £69,000 in May 2024). However, the rate of reduction was slower than anticipated and additional training for new recruits increased direct staff costs more than anticipated. Nonetheless, this strategy had a positive impact on the size and stability of the staff teams with a consequent benefit to care practice in all Strode Park's services and remains a key element of the Foundation's on-going Human Resources strategy.

Inflationary pressures in the food and energy markets added to the cost pressures.

Further unplanned expenditure has been required to upgrade fire detection and prevention systems to meet new regulations introduced as a consequence of the Grenfell Tower tragedy.

A comprehensive and expensive upgrade to the electrical wiring system at Strode Park House was also required.

The operating loss combined with these required capital expenditures had a major negative impact on cashflow.

At 31 March 2024, unrestricted funds were (£247,920) which is a significant decrease on the £1,528,762 held at the end of 2022/23. The strengthening of the reserves remains a key aspect of Strode Park Foundation's financial recovery plan.

Plans for the future

By necessity, Strode Park Foundation's plans for the short and medium-term focus on a return to profitability and strengthening of cash reserves. The charity is determined that the strategies employed to achieve these goals will not undermine the high quality of care provided.

To achieve these ambitions the Foundation's plan for 2024/25 retains the following three key elements:

i) Service Improvements

The Foundation will continue to seek Good or Outstanding ratings from CQC for all regulated services and will endeavour to maintain the top 5 star environmental awards. The Foundation will continue to use regular, independent quality assessments commissioned from Platinum Care and Ashton's pharmacy to identify if and where additional improvements can be achieved. As and when affordable, there will be further investment to upgrade buildings and equipment. The Foundation will also seek to broaden and deepen service user involvement in decision making processes, especially in relation to staff recruitment.

ii) Improved Financial Performance

On the income side, high occupancy levels remain vital to the financial performance of the Foundation. The Foundation will also continue to press funders for fee increases that truly cover the cost of providing the appropriate level of care and which offset inflationary increases,

On the cost-side, the management team will continue to analyse rotas to ensure that staff are deployed in the most cost-effective way.

Additional cost savings will also be explored with a focus on ensuring the best deals possible from energy and utility providers.

The Foundation will also consider the affordability of paying off the residual mortgages held against Strode Park House and Footprints.

In 2023, the Council of Management recognised the need to strengthen reserves and boost working capital and to this end made the difficult decision to close the Redwalls home and to sell the building.

It is pleasing to report that all six of the residents living at Redwalls were successfully accommodated elsewhere in the Foundation and that all members of the staff team were offered suitable redeployment opportunities.

It is anticipated that receipts from the sale of Redwalls will be secured in late 2024.

iii) Strengthening Staff Resources

Despite a national and local staffing crisis, Strode Park Foundation has been extremely successful in improving recruitment and retention rates in 2023/24. The availability of strong, committed, and well-trained staff teams is the key to continuous improvement in the care services and Strode Park will continue to review its recruitment systems to ensure maximum efficiency.

In 2024, the Foundation will remain committed to providing an impressive level of in-house training for all staff members, including supporting a new cohort of Carers who wish to undertake training as Nurse Associates.

Summary

It has been a challenging year and everyone associated with the Foundation deserves credit for their on-going commitment and determination to ensure that the interests of the people that rely on the services are always at the forefront of everything we do.

This has been the guiding principle and underpinning value of the charity since its incorporation nearly eighty years ago.

One person who has epitomised these principles and values is Nick Wells who will be stepping down as the Chair and a trustee after 17 years association with Strode Park Foundation.

Some of Nick's achievements are celebrated elsewhere in this report but I would like to conclude with a personal thanks to Nick for being a wonderful, generous, calm, and insightful boss and mentor for so many years.

Nick, thank you for everything. Your contribution has been immense, and you will be missed.



Paul Montgomery
CHIEF EXECUTIVE



Triumph over Adversity

It's been a challenging year for Strode Park Foundation but we have so much to celebrate. Each and every resident should be proud of what they have accomplished.

It's the spirit of our service users which keeps us doing what we're doing and it's their positive attitude that enables them to triumph over adversity. We make our own headlines. Here we share some stories of residents who are inspiring us each and every day.



Oh I do like to be beside the seaside

Marilyn, known to everyone as Nanna, enjoyed a day at Herne Bay seafront. Nanna hasn't been out for such a long time but now the world truly is her oyster. She knew she was going out but it was a surprise where she was going.

She started with something small and just a short distance from home and to say she had a great time is an understatement. Her next adventure is already being planned.

www.strodepark.org.uk/news

Money matters for Ash

Ash is currently having help and support to manage his own finances and learn about budgeting. This is a big step for him and one which we will support him and others with as much as possible .

Well done Ash!



Great catch, Gill

Gillian is a resident who has achieved so much recently. What may seem small to us, is a big deal for Gillian. The goal was to see if she could manage to catch a ball independently. Yesssss!

Wow, Gill. We're super proud of this small for some, but mighty for you, achievement.



Ryan's sporting chance

Ryan has been attending the Flyerz Hockey session down at Herne Bay Hockey Club every Thursday. Ryan loves being on the pitch learning new skills and on a Saturday he enjoys sitting up on the balcony watching the league games and cheering everyone on.

During a tournament in the summer the club presented

Ryan with his very own shirt that has his name and number on the back! Ryan is a big supporter of the club, comes down to watch our games when he can and having him cheer them on is like having a 12th man on the pitch!

Ryan is also a Herne Bay Football Club fan and is a firm fixture in the stands.





Monica reaches a huge milestone

One resident had a goal to put her own hand into some water and reach for a floating toy independently. Monica smashed it and we're so proud of her achievement.



Kath fulfils lifelong dream to go to Crufts

Our resident dog lover Kath, who has been a resident at Strode Park House since 1962, went to Crufts.

She even managed to meet the winning Best in Show dog, an Australian shepherd called Viking.

www.strodepark.org.uk/news



Charity shop aids key skills for residents

Mark has recently started volunteering in the Strode Park Shop in Herne Bay which he is enjoying immensely. Mark sometimes finds changes to his routine difficult and struggles to want to go out and about but he has been really enjoying working on the tills and meeting lots of new people and its doing his confidence the world of good.

Peggy tastes new flavours

Peggy has been using a new device called Biozoon, which turns liquid into intensely flavoured foam bubbles that then instantly dissolve without the need to swallow which allows Peggy to get the tastes of her favourite flavours.

Staff have worked tirelessly to support her to regain aspects of her life back after a sharp decline in her health.



Barry's pedal power

Barry didn't want to leave his room or join activities. We were concerned about him and made contact with learning development nurses as well as

his old physio who had discharged him in the past.

The home organised Barry to go to a cycle park which he really enjoys. That involves physio which he now goes to every other Friday.

Barry has since perked up and he seems to be back to his usual self - happy and smiling. He loves socialising with people and joins activities provided in the lounge or in the hub.



WE BELIEVE IN INDEPENDENCE,
WELL-BEING AND CHOICE

Reflecting on the End of an Era

As our Chairman Nick Wells steps down after 17 years' service, we take a look back at Strode Park Foundation since 2007.

Nick Wells started his journey with Strode Park Foundation in 2007 when he joined the Council of Management as a Trustee.

In 2015 Nick stepped into his role as Vice Chairman, deputising for the then Chairman Ray Cordell. Nick took on the top role as Chairman of the Council of Management in 2019, a role which he has flourished at and will leave a legacy for many years to come.

Nick has seen and been involved in many integral things for Strode Park over the last 17 years - from expanding our services, supporting staff through a pandemic to joining residents in social activities.

2007

The start of 2007 saw the reconfiguration of the Ben Thompson Hall Day Centre (now known as The RISE Hall). This ensured service users had the best possible environment and equipment to aid their rehabilitation.

In May 2007, a new facility was completed which included a large physiotherapy suite, fully equipped therapy kitchen and bathroom, large seminar and activities room and some multi-purpose consultancy rooms.

Rooms previously used for Coach House staff were converted into a bed-sit flat.

2008

In 2008 the ReAbility project hosted an outreach NHS Driving Assessment Centre that helped people with neurological disabilities to regain their Driving Licence and provide advice about vehicle adaptations.

2010

In April 2010, it was agreed by the Council of Management that we should continue to develop services for people with disabilities, in particular 'continuing care'. Strode Park successfully tendered for contracts to provide services with acquired brain injury as well as other long and short-term disabilities.

2011

This year saw the development of the service for children with disabilities, which was one of the charities strategic aims at the time. Strode Park Foundation took over the management of 'Footprints', which was previously managed by Kent Kids.

Residential and respite services were available for children aged between 5 and 16.

After the devastation of a fire in 2010, the Theatre's new Green Room re-opened.

2012

We successfully won a contract to deliver supported living to encourage independence. This increased and strengthened the demand for the then ComCare and outreach services.

The opening of the Coach House Mews, which consists of three superbly designed and purpose built supported living flats.



2013

Strode Park Foundation successfully tendered for a Medway Council contract to take over the running of Platters Farm Lodge, which is a rehabilitation and respite service in Rainham, Medway. The services include a day service and a 43-bed residential facility for clients requiring respite and rehabilitation including a specialist service for people experiencing dementia related illnesses.

We launched our Pool Appeal in August 2013 to fundraise for a new hydrotherapy pool.



Our first residents moved into the newly constructed and purpose-designed supported living facilities at the Coach House Mews.

2014

Our Hydrotherapy Pool Appeal campaign successfully raised more than £250,000 towards a much anticipated therapeutic suite.

In November 2014 we opened our charity shop in Bank Street, Herne Bay.

2016

The charity's 70th anniversary. To celebrate in style we were chosen as 'Charity of the Year' by Kent and Medway Councils and the Kent Messenger Group, Furley Page Solicitors and Herne Bay Rotary Club.

2017

Theatre in the Park celebrated 25 years of entertaining.

We launched our Footprints 'Space to Play' appeal to raise £130,000 for Footprints. This includes a spacious indoor activities and play room, sensory room and refurbishment of two existing respite rooms.

2018

Renovation work to our supported living facility at North Lodge was completed to allow use of the most modern electric wheelchairs.

Our sensory spa garden at Strode Park House was fully landscaped and planted.

We celebrated the completion of a £17,000 refurbishment of the grand lounge in Strode Park House.

In October we took over the ownership and management of the Fynvola Foundation. The Faversham home 'Lady Dane Farmhouse' was then incorporated under the Strode Park Foundation umbrella. We were chosen as the Lady Mayoress of Canterbury's chosen charity, with more than £14,000 being raised during the year.

2019

The Space to Play project at Footprints was officially opened.

2020

The pandemic hit and the challenges we were faced with Covid-19 were unprecedented. Strode Park's response to the pandemic was more than impressive. Strode Park's response to the pandemic was impressive and not one of our 400 people supported by the foundation passed away as a result of COVID-19.

2021

We celebrated 75 years of caring for people with disabilities with a wonderful service at Canterbury Cathedral.

Our holiday bungalows were redesignated to provide further supported living accommodation to meet increased demand. We received a record number of grants to aid us with the Covid crisis.

2022

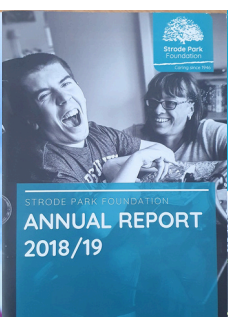
In conjunction with Epilepsy Here, Strode Park Foundation developed an on-line and telephone epilepsy advice service.

2023

There was a major investment in buildings and equipment including installation of more than 40 overhead hoists at Strode Park House and the Coach House, relocation and enhancement of the sensory room at Lady Dane Farmhouse, replacement of aging window frames at Strode Park House, and upgraded epilepsy night monitoring kits at various sites.

2024

Each week we deliver approximately 6,313 hours of care to more than 133 people and all regulated services are rated as 'Good' by CQC.



OUR SERVICES

Caring since 1946, Strode Park Foundation is a charity, providing vital care, support services, supported living opportunities and day and leisure services for children and adults with a range of disabilities

 **133** SERVICE USERS

 **6,313** HOURS OF CARE

*on average per week

STRODE PARK HOUSE

The home, in Herne, is registered for 55 beds, offering a homely environment for 40 permanent residents and up to 15 guests who come on a short-term basis for neuro-rehabilitation and respite care.

THE COACH HOUSE

The Coach House offers residential care for adults with disabilities in Herne. The team at the Coach House offer support, advice, and care to ensure adults are in a safe and secure environment whether that be long- or short-term basis.

FOOTPRINTS

Footprints specialises in the care of young people with disabilities. The residential home is based in Canterbury. The support and care are tailored to the individual and their specific needs, makes life at Footprints stimulating and fun. By offering high quality residential care which is accessible, homely, and safe we can also give families the support they need.

PLATTERS FARM LODGE

Platters Farm Lodge offers short breaks, respite, rehabilitation, and long-stay facility for adults in Rainham, Medway. Individuals can live at Platters Farm Lodge on a long-term basis. The service also provides people with dementia-related care and support.

LADY DANE FARMHOUSE

Lady Dane Farmhouse is home to adults with mixed disabilities who need long or short-term care in Faversham. The residential home is a fun and nurturing environment and allows people to live as independently as possible.

DAY OPPORTUNITIES

Adults aged over 18 with physical disabilities can come along and enjoy our day care opportunities and sensory enrichment programme at our site at Herne. The RISE Centre is our facility specially designed for adults with physical disabilities.

SUPPORTED LIVING

Our tailored supported living packages are provided as part of our wider Lifestyles Community Service, with a number of individuals receiving high quality and individualised care with a specific focus on a person making informed choices, staff encouraging and supporting optimum wellbeing and a real strive towards independence. Our supported living homes are at Herne and Faversham.



EVERY HOME AND SERVICES IS



WE PROVIDE HIGH QUALITY SERVICES TO MEET THE CHANGING AND INDIVIDUAL NEEDS OF PEOPLE WITH DISABILITIES.



VOLUNTEERING

We continue to support, embrace and celebrate our volunteer workforce. As of March 2024, we had approximately 61 volunteers across all our sites taking on different roles to keep some of our core fundraising functions going.

We have around 20 volunteers that help us with our retail fundraising. This includes both within the front facing shop in Bank Street, Herne Bay, as well as our donation sorting area at our main site in Herne. Donations are currently at an all-time high. We receive regular donations every Tuesday and when space and resource allows, directly within our charity shop.

We work as a team to find the best end place for them to raise as much as we can. For example, they will now go to either the shop, eBay, Vinted or be uploaded onto Facebook marketplace. This has allowed us to generate more funds from even more donations.

Some of our volunteers also support our paid staff within our services including care, catering, housekeeping, gardening, fundraising and administration support.

Our Council of Management, continue to provide an invaluable contribution to Strode Park. Members of the Council of Management carry out essential tasks to enable the organisation to function in an effective and professional way and stays true to the mission of providing the best possible service to people with disabilities.



Stella has been a volunteer for 12 years.

Stella is a 'charity shop volunteer' and works every Wednesday at our shop in Herne Bay. Her role involves putting out stock and greeting customers.

Alongside all the hard work Stella does at the charity shop she also regularly helps at some of our events, helping to run stalls and games. In addition to this, Stella offers to help in our donation sorting area in Herne when there are many donations coming in.

“ Keep it up, we don't volunteer for ourselves we volunteer for the residents to help make their lives better, so it is a commitment and stick to it. ”

Stella



(L-R) Stella, Trish and Sarah helping at our Easter Egg Hunt

WE ARE INDEBTED TO EVERY SINGLE ONE OF OUR VOLUNTEERS

FUNDRAISING REVIEW

A huge thank you for your help and support over this year to help us provide vital care and support to children, young people and adults with a range of disabilities - some very severe and complex, and to the hard work of the fundraising team who help make it happen.

We are incredibly grateful for the generosity and compassion of our donors who are continuing to support us to raise as much funds as we can, in a very challenging national landscape. We are still seeing the effects of the global pandemic, and now a cost of living crisis is added to this. It is making it hard to gain support from local businesses and individuals who themselves are still struggling. We are also finding competition for charitable grants equally as challenging as competition soars in this field.

We have had support this year from schools, corporate businesses, grants and trusts, individuals, event participants and major donors. Within these groups we have been able to forge new relationships and create new support, as well as continuing to work alongside our friends and long-standing supporters.

We pride ourselves on the fact that donors to Strode Park Foundation can be confident that we comply with the regulatory standards for fundraising.

EVENTS

We held our first ever Pirate Party, working with CBeebies' Swashbuckle star Gem Hunt. This was very successful and returned in 2024 to enhance our fundraising.

Theatre in the Park, now in its 31st year, held a bumper season packed full of acts - some familiar faces and some new ones, raising much-needed funds through music. Most of the shows were sold out or near to sold out and we enjoyed adding additional fundraising with these events through our bar sales and raffles.

We also worked with The Rising Sun in Beltinge to hold a Halloween fundraiser.



Around the festive season we also welcomed the East Kent Widows Sons bikers for their annual bike run, with them this year making a huge donation of 15 shoe boxes for our appeal.

CHRISTMAS APPEAL

In November we launched our Shoe Box Appeal to make our residents' Christmas magical. We called for each resident and service user to have a single shoe box each wrapped and filled with Christmas gifts and goodies. The response was incredible and we smashed our target of 165 boxes. Staff were involved with helping us to share our campaign far and wide and our Senior Management Team delivered them just before the big day.



We held a Christmas light switch on for residents, with our tree being donated by Pat Todd.

OUR VERY GRATEFUL THANKS TO:

- Ethelbert Lodge of Freemasons in Herne Bay.
- Whitstable Active Retirement Association (WARA)
- Strictly Social Club
- Cllr Barry Kemp and Cllr Mark Joy, Medway Council
- Cllr Andrew Harvey, Canterbury City Council
- EKS Office Equipment
- Active Life
- G4S Patient Transport
- Ollly Crimmins
- Curco
- Edward Vinson 1957 Charity Settlement
- Screwfix Foundation
- Friends of Strode Park
- Blend Coffee Lounge, Birchington
- East Kent Widows Sons
- Robyn from The Little Flower Shop
- Herne Bay High
- Metrobank
- Cains Amusements
- Phill Ling
- Donna at The Enchanted Garden
- Retreat into Wonderland
- Wilbee & Son
- Kavanagh Cinema
- Herne Bay Harriers
- Queenborough Fishery Trust
- Herne Bay Rotary Club
- Pat Todd

GAVIN AND GARY ON THEIR WAY TO £30K

Gavin and Gary of The Copper Pottle in Beltinge reached £28,750.30, funds them along with their punters, have raised since 2015.



We are grateful to more than 100 local businesses who hold a collection pot for us and continue to collect the pounds, pennies and loose change throughout the Canterbury district.

CHARITY OF THE YEAR

We were picked as 'Charity of the Year' for two years by Fluidity. Headed up by Toby who has a personal connection to Strode. We were chosen by the President of The Forest of Blean Rotary Club, Mike Moore's chosen charity. When by the end of his tenure he successfully raised a phenomenal £9,000.

We had very good working relationships with local businesses including all the local supermarkets, but with particular mention to Sam at Tesco, Whitstable. We were their first charity to use their new outdoor exhibition space. We utilised this to showcase our residents' artwork.



REMEMBERING PHILL

Earlier this year we were deeply saddened by the death of our very dear friend and colleague Phill Ling, following a period of short illness.

Phill was involved with Strode Park Foundation for more than a decade and was our Service User Advocate, as well as being a regular and frequent visitor at Strode Park House for both work and respite. He also made regularly donations to Strode.

Phill was a very valued member of Strode Park and we all have fond memories of him. He will be greatly missed by us all. In dedication to Phill at our 2024 Vital and Valued Staff Awards we introduced a 'Phill Ling Residents' Award', which will now become a yearly tradition in his memory.



IT'S NOT ABOUT HOW MUCH WE GIVE, BUT HOW MUCH LOVE WE PUT INTO GIVING

WE HELP PEOPLE TO ACHIEVE THEIR
GOALS AND LIVE THE LIFE THEY
CHOOSE.



FINANCIAL ACCOUNTS FOR THE YEAR

| Financial Activities | 2024 | 2023 |
|---|--------------------|--------------------|
| Income from: | | |
| Donations and legacies | | |
| Donations and legacies | 76,065 | 188,476 |
| Grants Receivable | - | 8,776 |
| Charitable activities | | |
| Care services | 11,520,556 | 11,361,459 |
| Other trading income | 178,308 | 237,357 |
| Investment income | 3,283 | 1,726 |
| Other | 65,844 | 36,859 |
| Total income | £11,844,056 | £11,834,653 |
| Expenditure on: | | |
| Raising funds | | |
| Costs of raising funds | 108,579 | 290,478 |
| Charitable activities | | |
| Care services | 13,411,625 | 11,827,410 |
| Total expenditure | £13,520,204 | £12,117,888 |
| Net income before gains/(losses) | (1,676,148) | (283,235) |
| Recognised gains/(losses) | | |
| Remeasurement gain/(loss) on defined benefit pension scheme | - | 702,558 |
| Net movement in funds | (1,676,148) | 695,712 |
| Fund balances brought forward | 6,647,106 | 5,951,394 |
| Fund balances | £4,970,958 | £6,647,106 |
| | 2024 | 2023 |
| Net assets as at 31 March | | |
| Fixed assets | 5,187,617 | 5,603,037 |
| Current assets | 2,018,140 | 2,809,001 |
| Creditors: Due within one year | (1,516,542) | (945,782) |
| Creditors: Due after more than one year | (713,692) | (809,377) |
| Defined Benefit Pension Liability | (4,565) | (9,773) |
| Total | £4,970,958 | £6,647,106 |

ENDING MARCH 2023

These financial statements have been extracted from the full annual financial statements prepared in accordance with the Companies Act 2006 which were approved by the Council of Management on 25th September 2024. The full financial statements have been audited and the auditors' opinion was unqualified and they have been delivered to the Registrar of Companies and the Charity Commission.

These summary financial statements may not contain sufficient information to allow for a full understanding of the financial affairs of the charity.

Further information and a copy of the full financial statements and auditors report can be obtained from:

Chief Executive,
Strode Park Foundation,
Herne,
Herne Bay,
Kent,
CT6 7NE

Signed on behalf of the Council of Management

Nick Wells
CHAIRMAN



Auditors' statement to the members of Strode Park Foundation for People with Disabilities

In our opinion the summarised financial statements for the year ended 31 March 2023 are consistent with the full annual accounts.

Azets Audit Services

Azets Audit Services
Ashford Commercial Quarter
1 Dover Place
Ashford, Kent
TN23 1FB

PRINCIPAL OFFICERS

Council of Management

Chairman

Mr N Wells

Vice Chairman

Mrs P Unwin

Treasurer

Mrs D Allaway FCCA

Members

Mr Russell Clark
Dr Paul Garrod
Mr Adrian Hyner
Mrs Sarah Toms
Mr Graham Tait

Patrons

Terry Waite CBE
Amanda Cottrell OBE

Vice Presidents

Mrs P Shephard MBE
Mr Brian Dale FCIPD

Advisors

Auditors

Azets Audit Services
Ashford Commercial Quarter
1 Dover Place
Ashford, Kent
TN23 1FB

Bankers

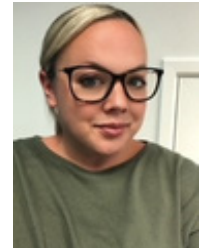
Metro Bank PLC
16 St Georges Street
Canterbury
Kent
CT1 2SR

Solicitors

Pocock's Solicitors of Whitstable
First Floor (North)
Gazette House
Estuary View Business Park
Whitstable
Kent
CT5 3SE



Paul Montgomery
Chief Executive
• BSc. MA. MBA.
MSc (Psych)



Becky Richards
Director of Care and
Deputy Executive
• MA
• PGDip
• Level 5 Leadership
and Management
Adult Social Care.



Desmond John
Finance Director
• FFCA



Helen Taylor
HR Director
• MSc Human Resource
Management
• MCIPD
• PGDip Personal
Performance Coaching



John Cotterill
Director of Care
• RGN
• DMS



Karen Jeal
Director of Fundraising
and Comms
• FdA Journalism
• MinstF (dip)



Kara Carey
PA to Chief Executive

Strode Park Foundation for People with Disabilities is a Company Limited by Guarantee and does not have a share capital. It is licensed by the Department of Trade and Industry to dispense with the description "Limited". Registered in England Number 407697. Strode Park Foundation for People with Disabilities is a Registered Charity under the Charities Act 2011.

Registered Charity Number 227794.

